

# T40.180SLP 75 V | Telescopic Specifications

## Performance

Lifting height — on stabilisers	17466.0 mm
Lifting height — on tyres	16200.0 mm
Rated capacity	4000 kg
Capacity (at max. height on stabilisers)	2500 kg
Capacity (at max. height on tyres)	1000 kg
Capacity (at max. reach on stabilisers)	500 kg
Max. reach on tyres	12800.0 mm

## Weights

Weight (unladen)	10490 kg
------------------	----------

## Traction

Standard tyres	DUNLOP 400/80-24 156B T37
1st gear / low range	4.8 km/h
1st gear / high range	24.0 km/h

## Drive System

Transmission	Hydrostatic with electronic regulation
Main drive	Hydrostatic motor

## Engine

Make / Model	Bobcat D34
Fuel	Diesel
Cooling	Coolant
Rated power (ISO 14396)	75.0 HP
Rated power (ISO 14396)	55.3 kW
Maximum torque at 1400 RPM	360.0 Nm
Number of cylinders	4
Displacement	3.40 L

## Hydraulic System

Pump type	Gear pump with LS valve
Pump capacity	80.00 L/min
Relief valve pressure setting	250.00 bar

## Cycle Times

Lift time - no load	15.8 s
Lower time - no load	9.9 s
Telescope in time at max. reach - no load	21.8 s
Telescope in time at max. height - no load	20.4 s
Telescope out time at max. reach - no load	36.5 s
Telescope out time at max. height - no load	36.5 s

## Brakes

Engine braking	Hydrostatic
Parking and emergency brake	Passive brake

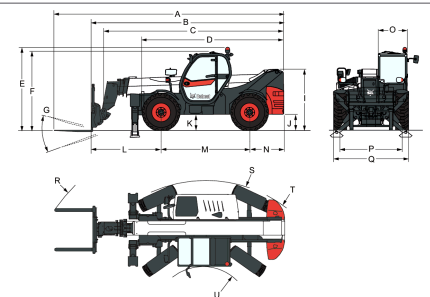
## Fluid Capacities

Fuel tank	145.00 L
Hydraulic reservoir	76.00 L

## Environmental

Operator noise level (LpA) (EN 12053)	75 dB(A)
Operator noise level (LpA) (EN 12053) uncertainty	4 dB(A)
Level of acoustic power (LWA)	104 dB(A)
Whole body vibration (EN 13059)	1.20 ms <sup>-2</sup>

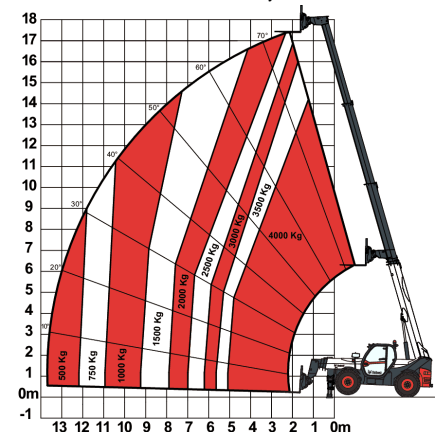
## Dimensions



(-) 857.0 mm	(L) 2263.0 mm
(A) 7425.0 mm	(M) 2850.0 mm
(B) 6220.0 mm	(N) 1107.0 mm
(C) 5821.0 mm	(O) 930.0 mm
(D) 4573.0 mm	(P) 1992.0 mm
(E) 2673.0 mm	(Q) 2418.0 mm
(F) 2536.0 mm	(R) 584.0 mm
(G) 124.0°	(S) 4150.0 mm
(I) 1956.0 mm	(U) 1519.0 mm
(J) 509.0 mm	

## Load Charts

With forks and standard 400/80x24 tyres, on stabilisers



## Options

Air conditioning	Basic tow hitch
Boom stop	Boom wiring harness and electric connectors
Custom colour	High comfort air suspension seat
Fire extinguisher	Keyless ignition (start/stop with keypad)
Forward/Reverse control on Steering Wheel Lever (no longer on joystick)	Michelin tyres - set of 4 x 400/80-24" 162A8 IND TL POWER CL
Lockable fuel cap	Pallet forks 1200mm length / Rigid frame / Forks included / Backrest included / For Quicktach tool carrier
Loudspeaker & radio ready	Pallet forks 1200mm length / Floating / 1,44m carriage / Forks included / Backrest included / For Quicktach tool carrier
PVC Document holder	Quicktach carriage with hydraulic attachment lock (boom wiring harness mandatory)
Pintle tow hitch (including rear electric socket)	Rotating tow hitch (including rear electric socket)
Protective grill for windshield (front and roof)	Standard engine ignition (with key) with additional keypad security
Rear Flat Mirror	Manitou carriage with hydraulic attachment lock
Roof window wiper	
Sun visor	
Support for vehicle registration plate	
Wheel wedge	
Work lights on boom	
Proportional engine fan with inverter	
Remote control system with on-board charger	

(boom wiring harness mandatory)  
Manitou carriage with manual attachment lock  
Pallet forks 1200mm length / Floating / 1,12m carriage / Forks included / Backrest included / For Manitach tool carrier  
Pallet forks 1200mm length / Floating / 1,44m carriage / Forks included / Backrest included / For Manitach tool carrier  
Pallet forks 1200mm length / Rigid frame / Forks included / Backrest included / For Manitach tool carrier  
Man platform ready (remote control system, boom wiring harness and boom stop mandatory)  
Protective zinc coat  
Winch ready (boom wiring harness mandatory)